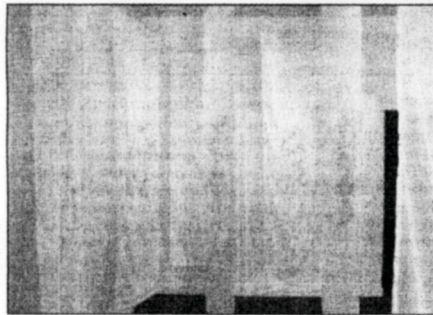


today

■ **ART:** Time, Shadow and Light exhibition at Glenhyrst Art Gallery



Submitted Photo

(Above) *Disappearing Act* by Teri Donovan captures a mood that reminds of 19th century pre-Raphaelite painting.

(Top left) *In The Dreamer*. John Ide generates a powerful chiaroscuro.

(Top right) Rey Baecher's *Red Spread* explores surfaces through reflection and the interplay of positive and negative space.

(Left) *Revisible*, an installation by Barbara Rehus, deals with the notion of people existing in the world while remaining invisible.

Art comes in all forms

Four diverse approaches to making art are showcased at Glenhyrst Art Gallery in the exhibition entitled *Time, Shadow and Light*'

Teri Donovan, a mixed media artist, takes us on a nostalgic journey, whose origin is rooted in her personal history. Using family photos as her subject matter, Donovan skilfully builds an encaustic wax and paint medium, collaged into wallpaper on a wood ground.

Disappearing Act captures a mood, which, in its melancholy, is reminiscent of 19th century pre-Raphaelite painting, in particular that of Dante Gabriel Rossetti, more in terms of the poetic than the stylistic quality of her work. These highly evocative, narrative driven paintings are an intimate window into a time described by haunting images of people and memories. The fluid medium lends an expressive, intuitive quality, the emotion embodying a range of hopes and sentiments, and, ultimately, a sense of comfort and innocence.

John Ide, another artist whose work is driven by an atmospheric narrative, references imagery borrowed from Leonardo da Vinci, Rodin, Magritte and others, and builds geometric, achromatic compositions carefully constructed and rendered in pencil, dividing the space into shapes of tonal gradations and texture.

In The Dreamer, Ide generates a powerful chiaroscuro, which carries the work beyond geometry and borrowed imagery into the realm of feeling and a



Steve Menhinick
REVIEW

romantic, dreamlike mood, reinventing mythology and applying it, investing it with new meaning, sympathetic to its origins.

Rey Baecher's pastel compositions take a good hard look at shape, space, texture and colour in his powerful photo realist still life series. Technically strong, Baecher invests vibrant colours - predominantly red, green and blue with black and white, and an intense light, to create an illusion of three dimensional life in his work.

Baecher's *Red Spread* explores surfaces through reflection and the interplay of positive and negative space in his complex compositions, repeating shapes to ensure a sense of unity and rhythm.

The installation piece, *Revisible*, created by Oakville's Barbara Rehus, with hanging screens, made from translucent fabric embellished and delineated with graphite and ink, deals with the notion of people existing in the world while remaining invisible.

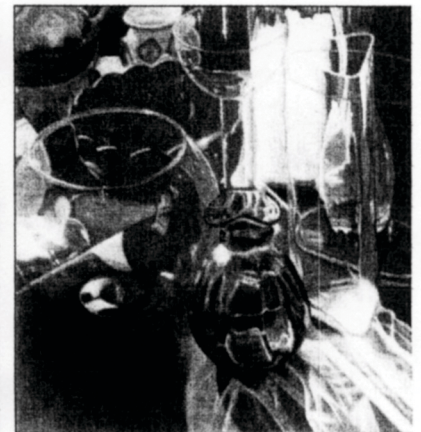
To help understand the narrative behind the images of faces on the screens, Rehus has provided a pocket within which is found a short biography, explaining something of the featured person's life. The partially transparent fabric is a metaphor rep-

resenting the invisible nature of lives and how through society's institutions some of us disappear.

These are the stories of ordinary people, unsung heroes, barely recognized or noticed in the world they inhabited. Two antique typewriters sit at the end of the room, for viewers to collaborate in this piece by sharing their own tales of invisibility and anonymity.

This diverse and evocative exhibition will run until May 10.

Steve Menhinick teaches visual art at North Park Collegiate and is a practising artist.



An Amazing Musical Biography

Beatlemania

On tour

PERFORMED BY THE BEATLES TRIBUTE

THE SANDERSON CENTRE FOR THE PERFORMING ARTS

SUNDAY MAY 23, 8PM

Tickets on sale now from the Sanderson Centre Box Office
Ph. 1 800 265 0710 or 519 758 8090
www.sandersoncentre.ca

The Spirit of Christmas

TICKETS ON SALE FRI. APR. 23

Rita MacNeil
WITH HER VERY SPECIAL GUEST
Frank Mills
"MR. MUSIC BOY HANDEL"

LIVE IN CONCERT
SATURDAY, DECEMBER 4, 2010 - 3PM
HAMILTON PLACE

Tickets on sale at Copps Coliseum Box Office, all Ticketmaster locations, online at www.ticketmaster.ca or charge by phone: 905-527-7966. Complete event listings visit: hccf.ca

www.RITAMACNEIL.COM www.FRANKMILLS.COM

\$3.00 DISCOUNT ON EACH TICKET PURCHASED BEFORE APRIL 30, 2010.

"JENNIFER IS BACK AND

THE EXPOSITOR
SERVING BRANTFORD SINCE 1848 FOR OVER 150 YEARS

PRESENTS MOVIES AT A GLANCE

GALAXY CINEMAS BRANTFORD
300 KING GEORGE ROAD 519-759-7011

SHOWTIMES FOR FRIDAY, APRIL 23 - THURSDAY, APRIL 29
MATINEES SATURDAY & SUNDAY ONLY

- THE BACK-UP PLAN (PG) 1:00, 4:00, 7:10, 10:00
- OCEANS (G) NO PASSES 12:00, 2:15, 4:30, 7:00, 9:30
- KICK-ASS (18A) 12:50, 3:40, 7:05, 9:55
- DATE NIGHT (14A) 12:40, 4:20, 7:20, 10:10
- CLASH OF THE TITANS 3D (14A) 3:30, 6:50, 9:40; WED-THURS 9:40
- THE LAST SONG (PG) 12:20, 3:50, 6:45, 9:25; SUN 12:20, 3:50, 6:45
- HOW TO TRAIN YOUR DRAGON 3D (PG) 12:10, 3:25, 6:30, 9:00; WED-THURS 6:30, 9:35
- THE BOUNTY HUNTER (PG) 6:40, 9:45; SUN 9:45
- KENNY CHESNEY: SUMMER IN 3D (G) SAT-SUN 1:00; WED-THURS 7:00